



## EZ-GL

### Simplified General Ledger Reporting for Payroll

#### Post Payroll Transactions to the GL

**EZ-GL** posts payroll transactions from Abra Payroll in the correct format for your accounting system. EZ-GL's powerful features set it apart from other GL-posting software. You can automatically allocate split-month payrolls or accrue future payroll estimates with the necessary reversing entry. GL account maintenance allows for easy modification of in-accurate GL entries. Other features include, posting accrued benefit liabilities, auto archiving of GL entries and the ability to post detail and summary reports per your requirements.

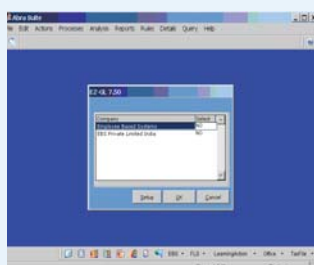
#### With EZ-GL, you can:

- ◆ Automatically allocates split-month payrolls or accrues future payroll and creates the necessary reversing entry according to your current accounting procedures
- ◆ Can post accrued benefit liabilities from Abra Payroll to the GL
- ◆ Automatically archive and purge GL data Auto restore process
- ◆ Unique edit feature allows for easy modification of inaccurate GL entries
- ◆ Post selected GL accounts as consolidated or detailed transactions
- ◆ Create a check output file

#### How can I link my payroll software to my accounting system?

#### EZ-GL provides the answer by

- ◆ Automatically posts payroll transactions in the correct format for your accounting system
- ◆ Produces comprehensive reports that show you all your general ledger postings and corrections
- ◆ Eliminates the need for time-consuming double data entry
- ◆ Integrates completely with Abra Payroll



**Simplified  
General Ledger  
Reporting for  
Payroll**

#### Our Mission

"Help companies to ensure human resource and payroll excellence by providing them with high-quality products and services that perform beyond their expectations"